

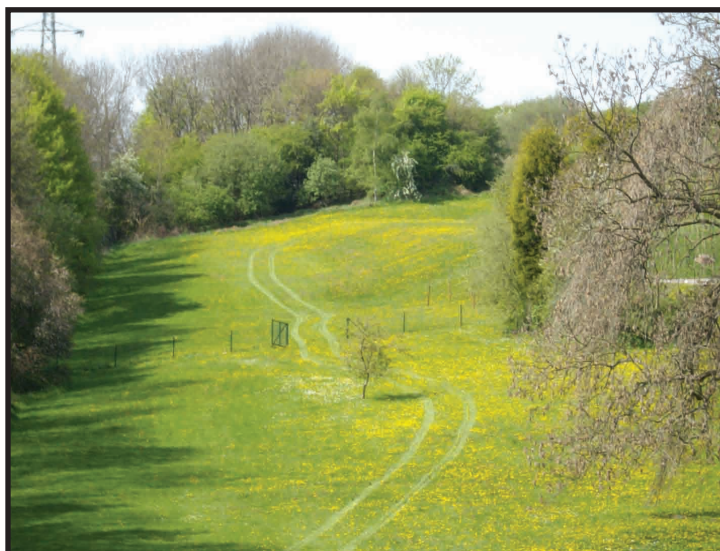
Theme 3 - Environmental

In this section the intention was to assess your opinions on those services which directly affect the environment. The majority of respondents were satisfied with street cleaning, street lighting, grass cutting, the air quality, and the level of noise.

However, some concerns were expressed with regards to the Right of Way footpaths, the number of public seats/benches, and the lack of floral decorations in the village.

The main concern was the maintenance of roads and footpaths, with these being rated poor or very poor by the majority.

Action
The Parish Council will work with Rotherham MBC to improve the condition of the main highways in Brinsworth and to ensure that the footpaths are maintained in a safe manner. In addition it will seek to improve the environment by providing floral decorations during the summer months.



24

Theme 4 - Health Care

The aim of this section was to gain opinions on the provision of healthcare facilities such as medical care, dental care, eye care and foot care.

In the main respondents were satisfied with the amount and quality of the services but highlighted travel as an area of concern, particularly with regard to

medical care.

Action
The Parish Council will work in partnership with the NHS, Rotherham MBC and other agencies to improve access to facilities.

